

D-SUB Slim Right Angle Type

Specifications

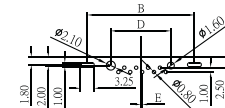
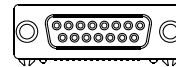
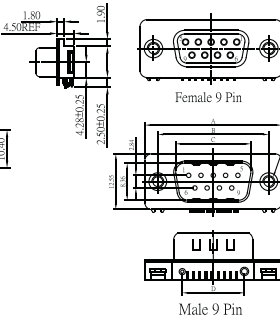
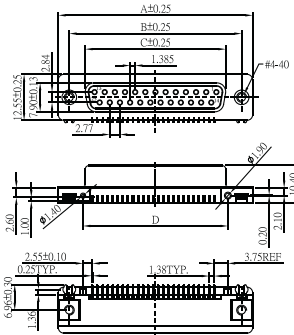
Current Rate:3 AMP
 Insulation Resistance:1000MΩ Min.
 Contact Resistance:20mΩ Max.
 Dielectric Voltage:500V AC for one minute
 Operation Temperature:-55°C to +105°C

Material

Insulator:Polyester,UL 94V-0
 ◎Standard:PBT
 Terminal:Copper Alloy



No. of Contacts	Dim. A	Dim. B	Dim. C	Dim. D	Dim. E
9(Male)	30.81	24.89	16.92	14.00	0.30
9(Female)	30.81	24.99	16.33	16.00	0.60
15	39.14	33.32	24.66	25.64	0.60
25	53.04	47.04	38.38	39.54	0.60



Recommended PCB Layout
 (PCB TOLERANCE ±0.05)
 Male 9 Pin E = 0.30
 Female 9 Pin E = 0.60

Order Information

